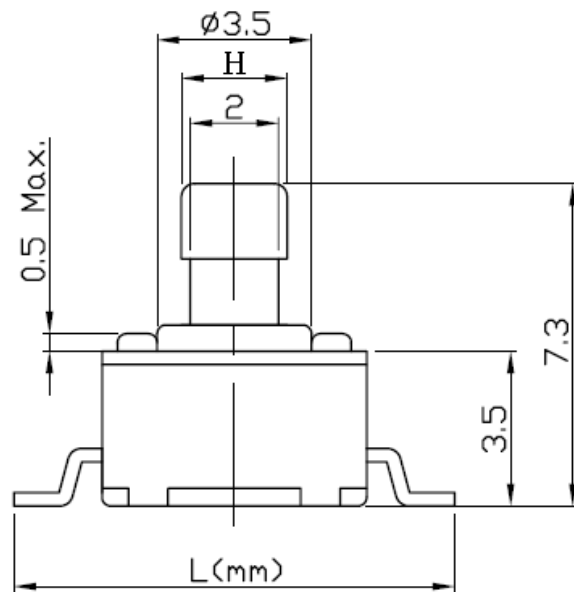
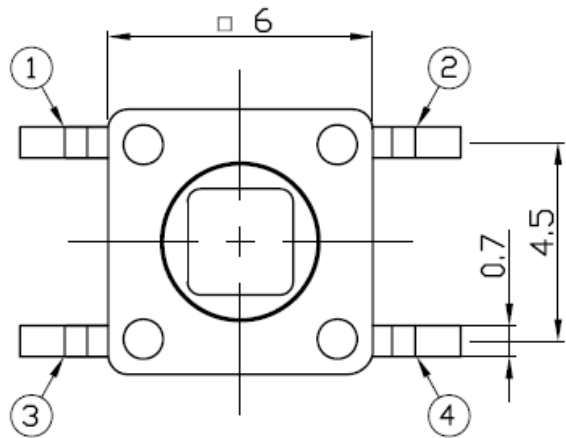
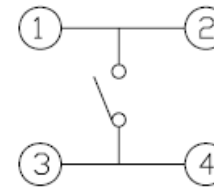
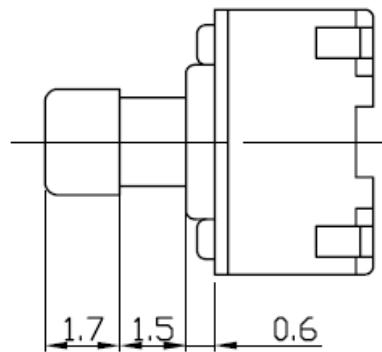


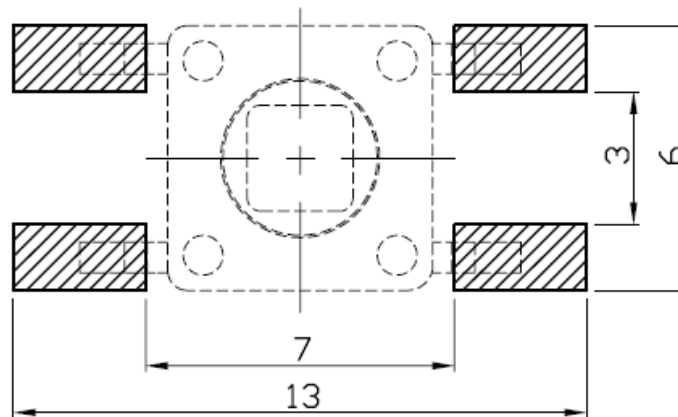
DIMENSIONS



CIRCUIT DIAGRAM



P.C.B MOUNTING PATTERN DIMENSION  
The following soldering patterns are recommended for reflow soldering



**SPECIFICATIONS :**

1. RATING : DC 12V, 50mA Max
2. CIRCUIT : 1C - 1P
3. OPERATING FORCE : N=160±30gf or R=250±50gf
4. CONTACT RESISTANCE : 100mΩ Max
5. TRAVEL : 0.25±0.1 mm
6. LIFE : 100,000 Cycles Min Phosphor Bronze  
200,000Cycles Min Stainless steel

10	B	□=2.8X2.8
9	A	□=2.4X2.4
L	H	

